

Installation Expertise with Tim McAdoo

How Not To Install That Flooring

We all have bad days, but some people just have bad habits.

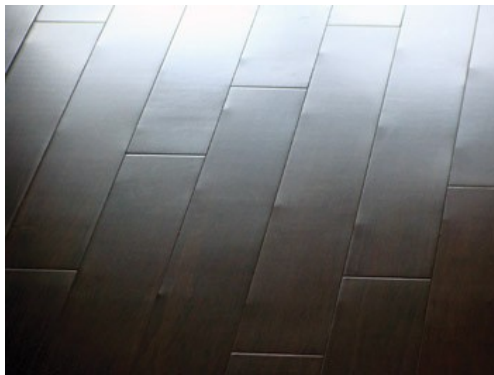
I thought I would share some of the issues I run into and hear about.



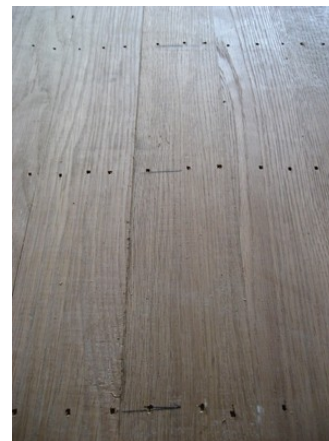
Don't use paint sticks to shim a bad subfloor



I did pull from 3 boxes. What shade issue?



What do you mean it needs a special nailer? Looks good from here!

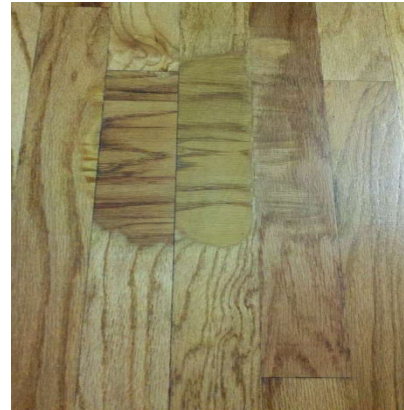


Taking face nailing a little to serious

Installation Expertise with Tim McAdoo



I'll get that outside corner to hold!



A little too heavy on the sanding.

And from our dear Retail Customers



What do you mean my flooring is not covered
Under the warranty?



I never wear high heels on my floor!



I didn't use Orange Glow Cleaner!

New Products;

Armstrong new Summit Hardwood Adhesive is an "All In One" hardwood adhesive. Summit provides the strength of a urethane adhesive and the user friendly features of a latex adhesive with no compromises of either. Summit is easy to clean as it will not permanently bond to the urethane wear surface of hardwood flooring. When the Summit Trowel Blade (included) is used, Summit becomes a high moisture concrete adhesive (up to 10 lbs Calcium Chloride, 85% Relative Humidity), a crack isolation membrane and a sound reducing membrane. Essentially, Summit hardwood adhesive may be used to glue down every single hardwood product Armstrong/Bruce offers, with the exception of foam backed parquet.

Installation Expertise with Tim McAdoo

Summit product data is available online at <http://www.floorexpert.com/Armstrong/fpoxpert.nsf/fa8b05540df3359785256eba00710744/7b4fbb07edbef3e185257ae200543ddf?OpenDocument>

As of January 11, 2013, Armstrong S-289 is no longer just a releasable adhesive. S-289 may now be used as a permanent adhesive when the flooring is installed into the S-289 while still in a wet state.

When S-289 is allowed to dry to the touch, it is a Releasable Adhesive. S-289 Adhesive must be allowed to dry to the touch when used over non-porous surfaces such as Existing Vinyl Flooring.

S-289 product data is available online at <http://www.floorexpert.com/Armstrong/fpoxpert.nsf/fa8b05540df3359785256eba00710744/9f86fd453596aaa5852579ce006e9552?OpenDocument>

DriTac 5000

Offering high initial tack and excellent sheer strength, DriTac 5000 LVT flooring adhesive is VOC compliant and provides easy troweling for successful installations of luxury vinyl tile and luxury vinyl plank. DriTac 5000 is very easy to clean up when wet, has low odor and is nonflammable. It inhibits the growth of bacteria and mold, is a non-hazardous and water resistant adhesive that provides a permanent bond.

Manufactured in the USA, DriTac 5000 provides excellent working time and superior coverage. It is available in 1 and 4-gallon plastic pails. DriTac 5000 is acceptable for use over moisture free concrete substrates, including; on, above, or below-grade. It may also be used over plywood, hardboard, terrazzo, steel, and well-bonded wax-free floor coverings. <http://www.dritac.com/products5000.php>

DriTac 5200

DriTac Eco-5200 is a zero VOC, zero solvent, pressure sensitive adhesive made for the interior installation of Fiberglass Back Sheet Vinyl and Carpet Tile flooring over approved substrates. This adhesive is formulated to be fast drying for quick installation.

DriTac Eco-5200 is a premium adhesive with very low odor. It offers a permanent or releasable

Installation Expertise with Tim McAdoo

and re-bondable pressure sensitive adhesive bond that is very easy to apply with a roller or trowel.

Manufactured in the USA, DriTac Eco-5200 is an eco-friendly adhesive that provides excellent working time and superior coverage. It is available in 1 and 4-gallon plastic pails. <http://www.dritac.com/products5200.php>

DriTac 5500

DriTac Eco-5500 is a “green” pressure sensitive flooring adhesive made for the interior installation of Luxury Vinyl Tile/Plank, **Multi-Ply Engineered Hardwood**, VCT, Fiberglass Back Sheet Vinyl, Carpet Tile, Vinyl Stair Treads, Cork Tile and Cork/Rubber/Foam Underlayment. DriTac Eco-5500 is a “green” adhesive that is VOC free with zero solvents.

DriTac Eco-5500 is extremely easy to spread and clean up, offers a very low odor and is nonflammable. DriTac Eco-5500 is an eco-friendly adhesive that provides excellent working time and superior coverage. It is available in 1 and 4-gallon plastic pails. <http://www.dritac.com/products5500.php>

MAPEI Ultracare

MAPEI, a global manufacturer of tile and stone installation systems, has just introduced a complete line of care and maintenance products for tile, stone and grout that will add to the durability of these types of floor covering installations. For the last 18 months, MAPEI's Research and Development team has worked on developing a complete line of high-quality products that will rival the other products currently in the market. MAPEI has also set up a full production line to support this new range of products.

MAPEI Planiprep SC

In response to demand for a strong, smooth surface ready for almost any floor-covering application, MAPEI has developed Planiprep SC(tm), a high-performance, fiber-reinforced skimcoating compound, to do the job. Its creamy smooth texture trowels easily to create a defect-free surface. The characteristics of Planiprep SC deliver an easy-to-apply skimcoat that applies from feather-edge up to 1" and its rapid-setting characteristic typically makes it ready for floor covering installation in 30 to 60 minutes. Planiprep SC is designed for skimcoating concrete and approved

Installation Expertise with Tim McAdoo

wood subfloors/underlayments. It can be used on interior floors in residential, commercial, heavy commercial and even industrial applications. Planiprep SC is supplied in 10-lb. bags, ready for use whenever and wherever needed to provide the perfect substrate for beautiful flooring installations.

<http://www.mapei.com/US-EN/product-detail.asp?IDMacroLinea=0&IDProdotto=2028300642&IDTipo=186&IDLinea=103>

MAPEI Kerapoxy CQ

Introducing Kerapoxy CQ, an epoxy grout containing quartz. Kerapoxy CQ brings the ability to deliver full, flush grout joints. The nature of the quartz aggregate used in Kerapoxy CQ makes it is easier than ever for installers to remove grout from the surface of tile during application. The reduced amount of residue and film present after grout application makes cleanup extremely easy. MAPEI has worked continuously to innovate products according to the latest research available, and we think the advancements formulated into Kerapoxy CQ make it a winner. We expect that our customers will appreciate the advanced 'cleanability' and will prefer it to other epoxy grouts.

<http://www.mapei.com/US-EN/product-detail.asp?IDMacroLinea=0&IDProdotto=2028300480&IDTipo=168&IDLinea=102>

About Tim McAdoo:

Tim is a certified instructor for Armstrong/Bruce, Avaire, Konecto and Starloc products and has been a member of the Armstrong Installation Training Team since 1984. Tim has highly developed installation skills and qualifications that have been combined over his 32 years in the floor covering industry. Tim is privy to all the latest innovations and techniques used in the installation of their products.

We are sure you will find your skills improved after attending one of his installation courses.



To view a complete list and register for one of Tim's installation trainings, click here on the QR or visit: <http://www.jjhaines.com/for-customers/installation-training/>



CONTACT TIM

tmcadoo@jjhaines.com
410-903-2930